





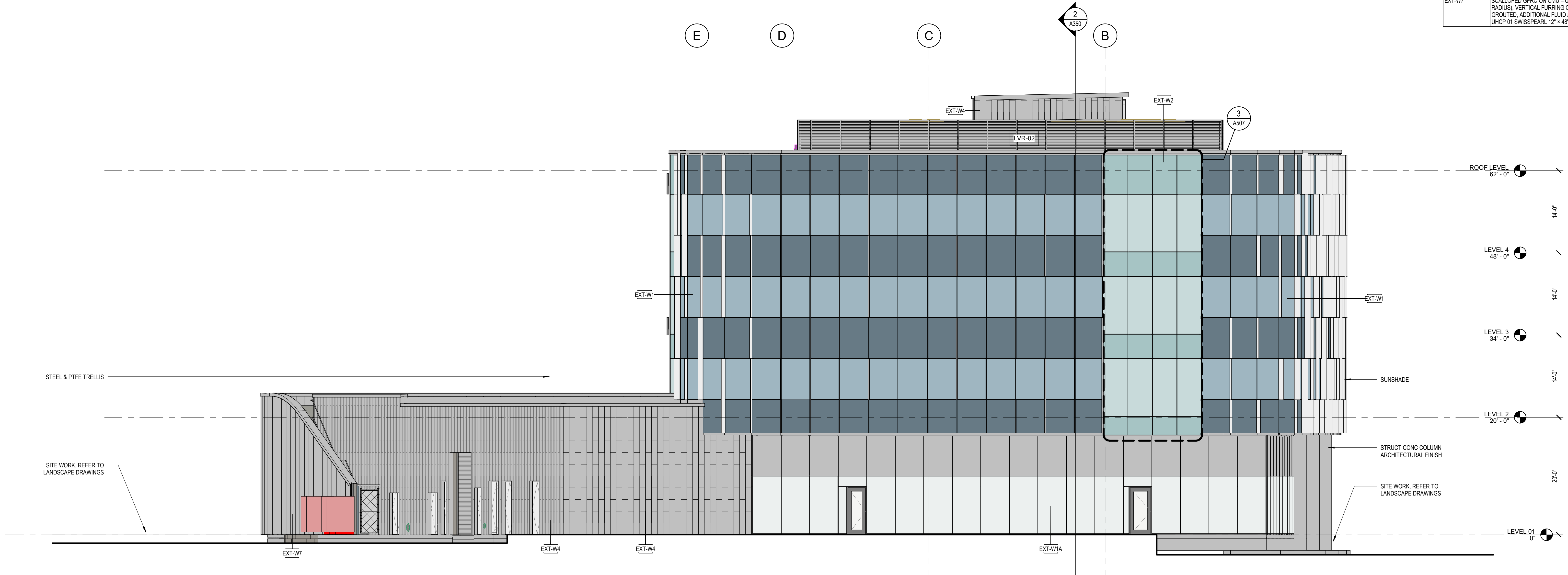
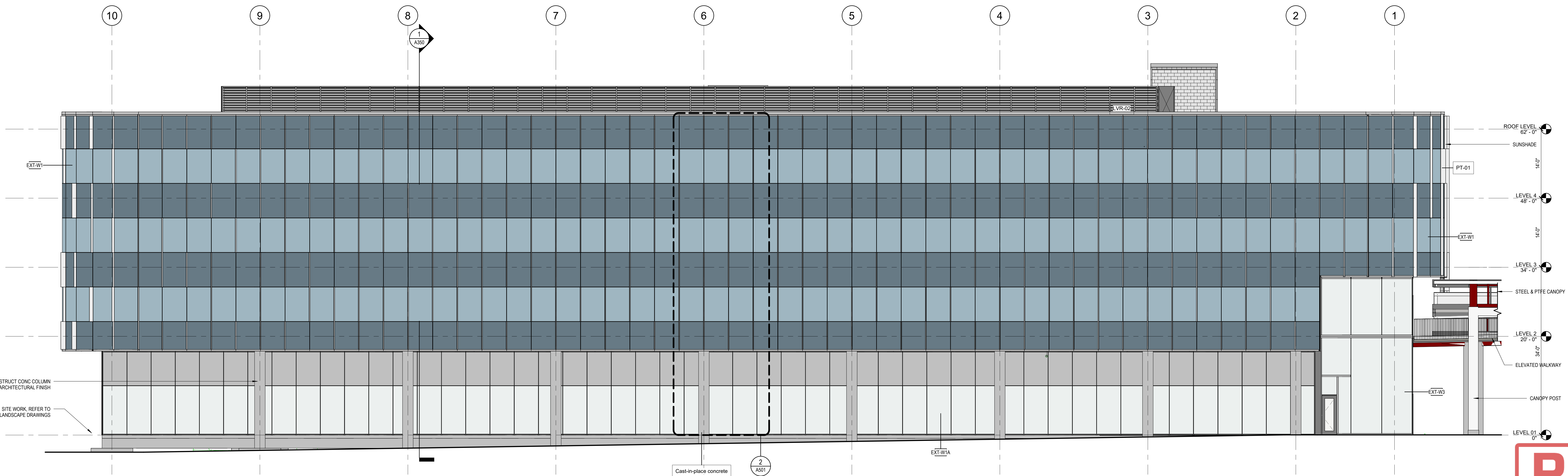


COLOR	EXTERIOR GLAZING TYPES
	GL-01 VISION
	GL-02 SPANDREL
	GL-03 VISION
	GL-04 SPANDREL
	GL-05 LOW-IRON VISION
	MTP-01 GLAZED-IN METAL PANEL

EXTERIOR ASSEMBLIES	
TYPE	DESCRIPTION
EXT-F1	CONCRETE SLAB ON GRADE. CONCRETE SLAB (REFER TO STRUCTURAL). V6-01 VAPOR BARRIER.
EXT-R1	KEE ROOF ASSEMBLY (HIGH ROOF). RS-01 ROOFING MEMBRANE, 5/8" EXTERIOR COVERBOARD SHEATHING, INS-01C2 4" RIGID INSULATION (R20 MINIMUM).
EXT-R2	PAVER ASSEMBLY AT AMENITY TERRACE. PAV-01 PAVER TILES, RS-02 MIAM ECHO ROOF SYSTEM, 2PLY COLD APPLIED ROOFING MEMBRANE, 1/2" EXTERIOR CEMENT BOARD SHEATHING, INS-01C2 TAPERED RIGID INSULATION - 4" MIN AT LOW POINT (R20 MIN), LOW POINT (R20 MIN), WATERPROOFING MEMBRANE/VAPOR BARRIER.
EXT-R3	PLANTING ASSEMBLY AT AMENITY TERRACE. PLANTING MEDIUM, RS-03 MIAM ECHO ROOF SYSTEM, 2PLY COLD APPLIED ROOFING MEMBRANE, INS-01C2 TAPERED RIGID INSULATION - 4" MIN AT LOW POINT (R20 MIN), WATERPROOFING MEMBRANE/VAPOR BARRIER.
EXT-R4	STANDING SEAM ROOF ASSEMBLY (LOW ROOF). RS-04 STANDING SEAM ROOF, SELF-ADHERING UNDERLAYMENT, 5/8" EXTERIOR COVERBOARD SHEATHING, INS-01C2 TAPERED RIGID INSULATION - 4" MIN AT LOW POINT (R20 MIN).
EXT-S1	VENTILATED SOFFIT ASSEMBLY (TYPICAL). MTP-03 LONGBOARD V-GROOVE 6" PERFORATED METAL SOFFIT, 3/8" CFMF.
EXT-W1	TYPICAL CURTAIN WALL - STANDARD GLAZING. EWS-01 TYP MULLION (ES WINDOWS GW-7000), GL-01 GLAZING (BLUE), GL-02 SPANDREL, INS-03A MINERAL WOOL INSULATION BOARD.
EXT-W1A	TYPICAL CURTAIN WALL - STANDARD GLAZING. EWS-01 TYP MULLION (ES WINDOWS GW-7000), GL-01 GLAZING (BLUE), MTP-01 GLAZED-IN METAL PANEL, INS-03A MINERAL WOOL INSULATION BOARD.
EXT-W2	TYPICAL CURTAIN WALL - "CARVE" GLAZING. EWS-02 TYP MULLION (ES WINDOWS GW-7000), GL-03 GLAZING (CLEAR), GL-04 SPANDREL, INS-03A MINERAL WOOL INSULATION BOARD.
EXT-W3	MONUMENTAL GLAZING. EWS-06 GLASS FIN MULLION (VETRAFIN), GL-05 LOW-IRON GLAZING (ULTRACLEAR).
EXT-W4	GFRG ON CMU - INSULATED (BOTH). UHCP-01 SWISSPEARL, 12" x 48" VERTICAL RUNNING BOND, 2 CHANNEL (VERTICAL), HYBRID COMPOSITE METAL GIRT (HORIZONTAL), INS-03A 2" MINERAL WOOL INSULATION BOARD - CONTINUOUS (RS-7), FLUID APPLIED AIR BARRIER, CMU-01 8" CMU.
EXT-W5	GFRG ON CMU - UNINSULATED (SERVICE TRAIL). UHCP-01 SWISSPEARL, 12" x 48" VERTICAL RUNNING BOND, VERTICAL FURRING CHANNEL, HORIZONTAL FURRING CHANNEL, FLUID APPLIED AIR BARRIER, CMU-01 8" CMU.
EXT-W6	SCALLOPED GFRG ON CMU - INSULATED (CHAMBERS). FRC-01 SCALLOPED GFRG (3 PANEL WIDTH, 5/8" RADIUS), 2 CHANNEL (VERTICAL), HYBRID COMPOSITE METAL GIRT (HORIZONTAL), INS-03A 2" MINERAL WOOL INSULATION BOARD - CONTINUOUS (RS-7), FLUID APPLIED AIR BARRIER, 5/8" EXTERIOR SHEATHING, 8" CFMF, INS-03C 3/2" MINERAL WOOL BATT INSULATION (R13 MINIMUM).
EXT-W7	SCALLOPED GFRG ON CMU - UNINSULATED (EXTERIOR STAIR). FRC-01 SCALLOPED GFRG (3 PANEL WIDTH, 5/8" RADIUS), VERTICAL FURRING CHANNEL, HORIZONTAL FURRING CHANNEL, FLUID APPLIED AIR BARRIER, CMU-02 8" CMU (BROCKED), ADDITIONAL FLUID APPLIED AIR BARRIER, HORIZONTAL FURRING CHANNEL, VERTICAL FURRING CHANNEL, UHCP-01 SWISSPEARL, 12" x 48" VERTICAL RUNNING BOND.



2 BUILDING ELEVATION - SOUTH  
1/8" = 1'-0"



1 BUILDING ELEVATION - EAST  
1/8" = 1'-0"

ROCAPOINT  
PARTNERS



Pompano Beach City Hall  
& Parking Garage  
125 Dixie HWY, Pompano Beach, FL 33060 USA

RocaPoint Partners  
309 East Paces Ferry Road  
Suite 825  
Atlanta, Georgia 30305

City Of Pompano Beach  
100 West Atlantic Boulevard,  
Pompano Beach, Florida 33060



Heilmuth, Obata & Kassabaum, Inc.  
124 Giralda Avenue, Suite 100  
Coral Gables, FL 33134 USA  
t +1 786 539 0800  
www.hok.com/studios/miami

Qualifying Agent, Jonathan Rae - FL Reg. No. AR02342

All reproduction & related property rights reserved © 2025  
In Association with

THA CONSULTING, Inc.  
Pompano  
40 NW 3rd Street, Suite 1102  
Miami, FL 33129  
T: 305 582 7123  
www.tha-consulting.com

Hammond & Associates INC  
Mechanical, Fire Protection  
489 N.W. 7th Ave, Suite 215  
Fort Lauderdale, FL 33311  
PH: 561 327 7111  
www.hammondengineers.com

KNL  
Kugler Ning Lighting, Inc.  
Lighting design  
247 West 57th Street Suite 1502  
New York, NY 10018  
www.kuglerlighting.com

SOCOTEC  
SOCOTEC Life Safety, LLC  
Life Safety  
1360 W Peachtree St NW Suite #1010  
Atlanta, GA 30309  
www.socotec.us

VDA, Inc  
Vertical Transportation  
1000 West McRob Road, Suite 209  
Pompano Beach, FL 33069

BAC  
Brooks Acoustics  
Acoustics  
49 N. Federal Highway #121  
Pompano Beach, FL 33062

NOT FOR  
CONSTRUCTION

Professional Seal



No.	Description	Date
50%	SCHEMATIC DESIGN	10/10/2025
100%	SCHEMATIC DESIGN	11/21/2025
50%	DESIGN DEVELOPMENT	12/22/2025
100%	DESIGN DEVELOPMENT	03/06/2026
0%	CONSTRUCTION	03/11/2026

10/10/2025

11/21/2025

12/22/2025

03/06/2026

03/11/2026

03/11/2026

03/11/2026

03/11/2026

03/11/2026

03/11/2026

03/11/2026

03/11/2026

03/11/2026

03/11/2026

03/11/2026

03/11/2026

03/11/2026

PZB  
PZ26-12000002  
05/27/2026

EXTERIOR ELEVATIONS

Original is 48" x 36" 1/8" scale contents of this drawing

Sheet Number

A301